

Progress towards Malaria Elimination in South Africa

National Department of Health
Directorate: Malaria

B. Shandukani, D Moonasar, E. Misiani and F.G. Benson

Durban, South Africa | 10 September 2011

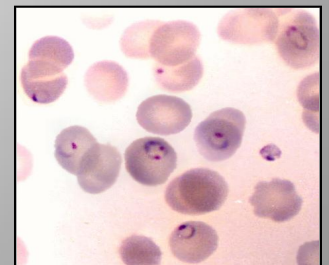


health

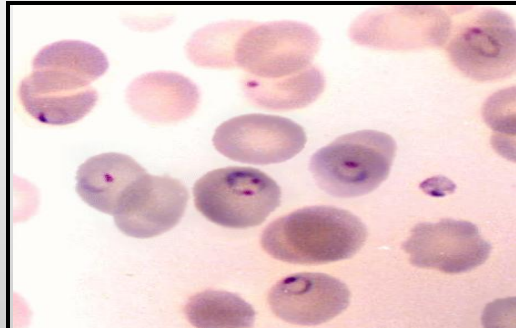
Department:
Health
REPUBLIC OF SOUTH AFRICA

Outline

1. Malaria Elimination Strategy
2. Systematic Approach to Elimination in South Africa
3. Malaria Situation in South Africa
4. Interventions for Malaria Elimination
5. Plans for 2011
6. Challenges and Way Forward



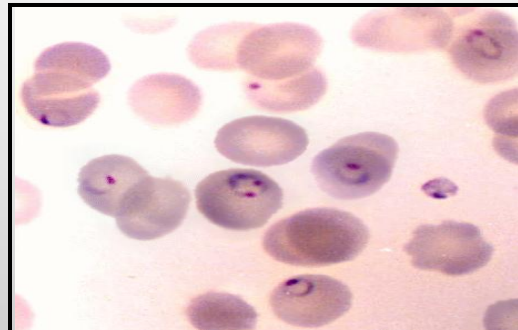
Malaria Elimination Strategy



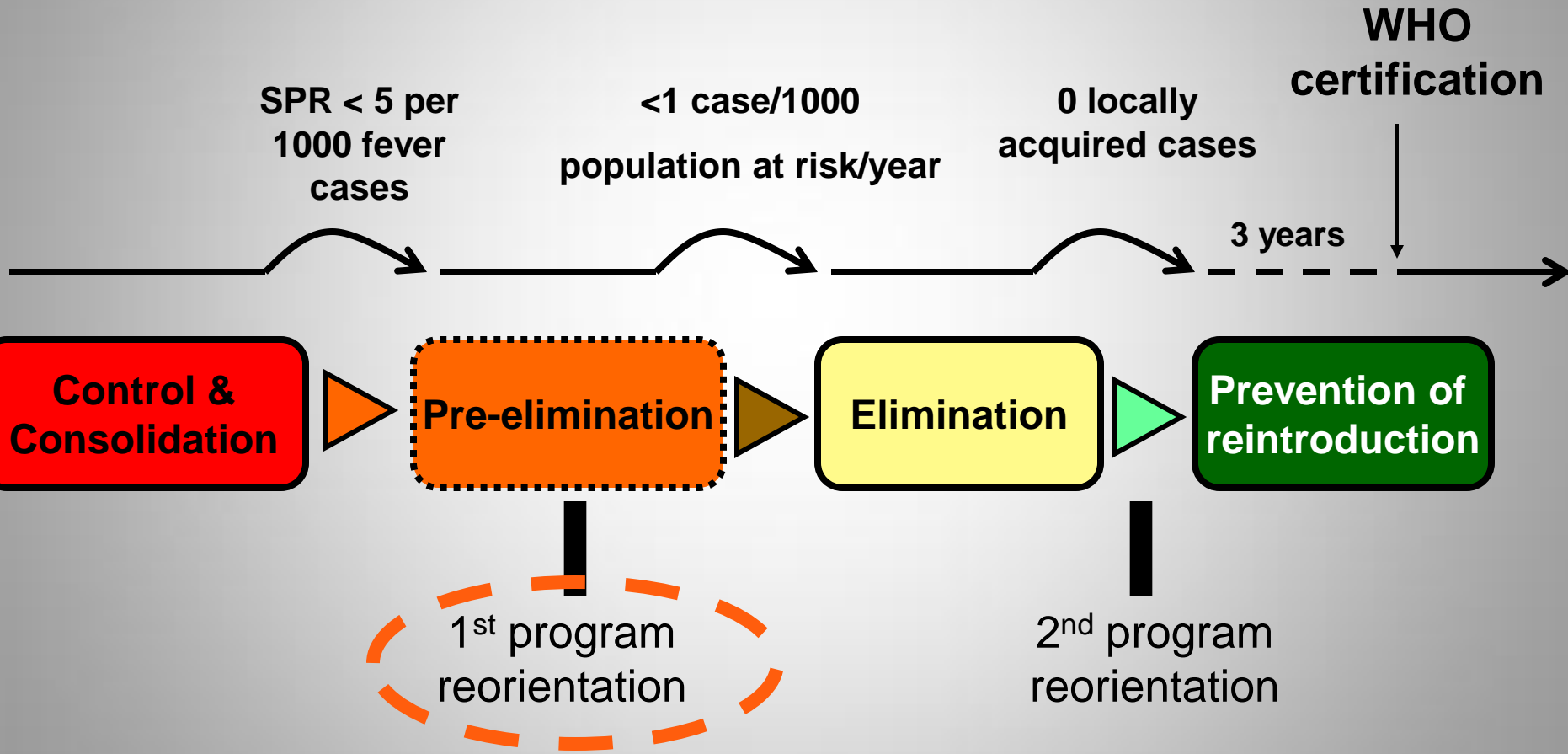
Goals and Objectives of the 2011-2018 Malaria Strategic Plan

- **Goal:** Reduce local malaria transmission to zero by 2018
- **Objectives:**
 - 100% ACT coverage by 2011 onwards;
 - Scale-up IVM (>90% IRS; 100% LLINs in targeted areas by 2015);
 - Scale-up surveillance (Active:100% cases investigated within 7 days or reporting; Passive: 100% of cases notified within 24 hours of diagnosis, by 2013);
 - Scale-up EPR (all outbreaks investigated within 2 weeks of detection by 2013);
 - 100% of risk groups targeted with appropriate IEC; and
 - Strengthen human resource capacity at all levels (100% of identified positions filled and appropriately capacitated).

A Systematic Approach to Elimination in South Africa



From Control to Elimination



SPR: slide positivity rate

District Incidence Stratified Against Elimination Continuum (Incidence /1000 population at risk)

Province	District	Province	District
LIMPOPO	CAPRICORN (0.00 - 0.12)	KWAZULU-NATAL	AMAJUBA UMZINYATHI, ETHEKWINI and others (0.01)
	MOPANI (0.15 - 13.09)		ZULULAND (0.01)
	SEKHUKHUNE (0.00 - 0.06)		UMKHANYAKUDE (0.12)
	VHEMBE (0.33 - 12.74)		uTHUNGULU (0.04)
MPUMALANGA	EHLANZENI (0.11 - 0.51)	Cases	Phases
	GERT SIBANDE (0.00)	> 5 cases/1000	Control
	NKANGALA (0.00)	< 5 cases/1000	Pre-elimination
		< 1case/1000	Elimination
	0 Cases		Prevention of Reintroduction

A Systematic Approach to Malaria Elimination

1. National Malaria Review

- Establish the status of the Malaria Control Programme in South Africa
- Establish baselines for major impact indicators and targets

2. Malaria Elimination Strategic Plan

- High-level vision and strategy for the malaria elimination program
- Defined major impact indicators and targets

3. Malaria Elimination M&E Plan

- Defined and detailed impact indicators
- Defined and detailed process indicators
- Defined and detailed output/outcome indicators
- Responsibilities for M&E

4. Malaria Elimination Implementation Plan

- Define key activities
- Identify key stakeholders
- Define key roles and responsibilities
- Define targets for implementation

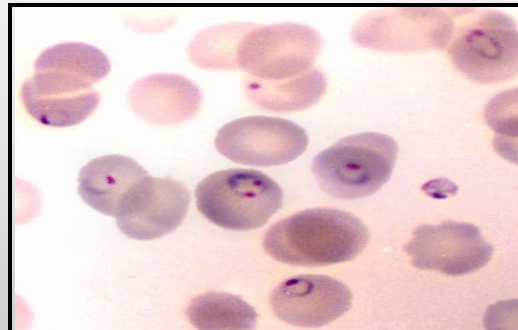
5. Resource Mobilisation

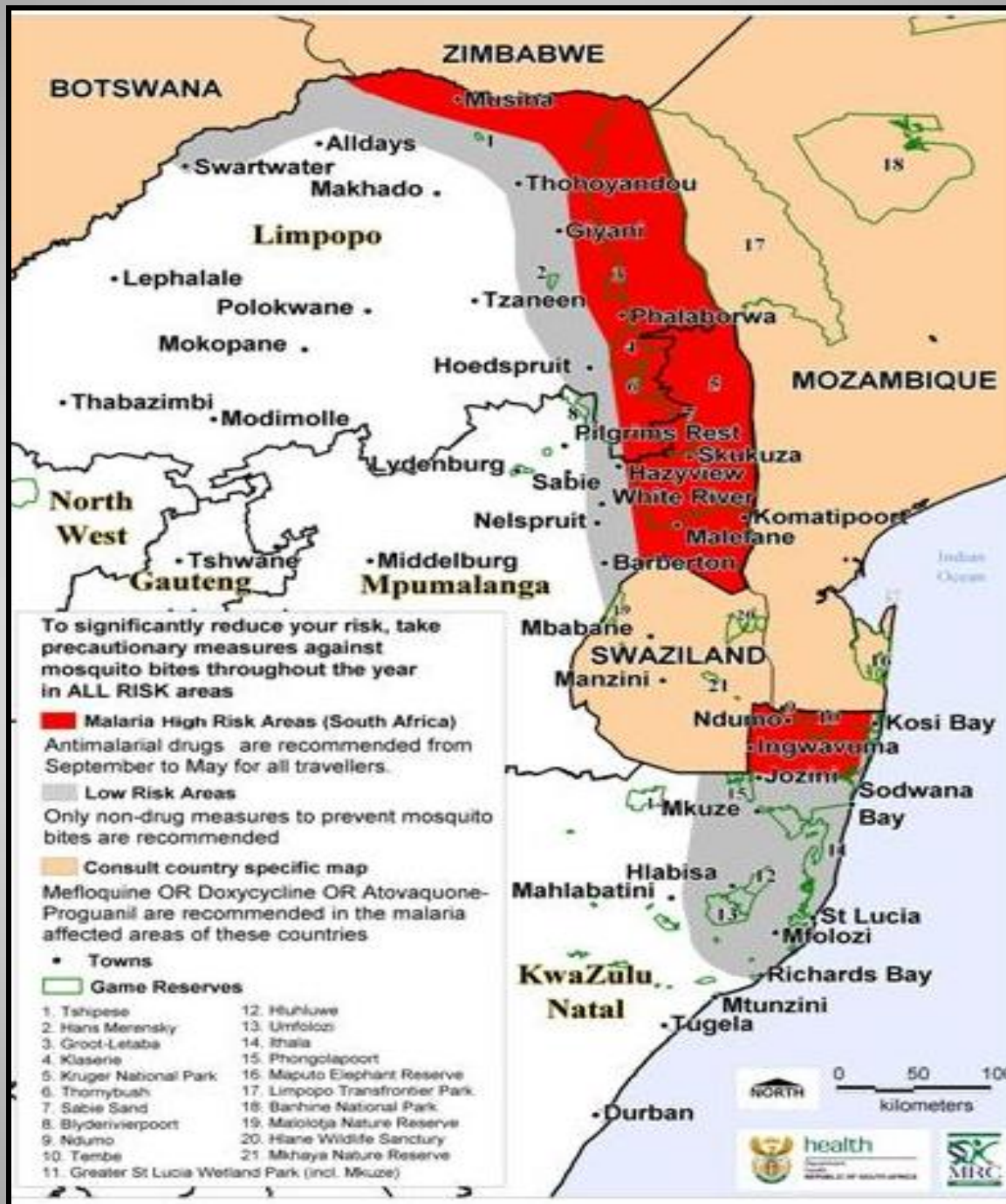
- Develop concept paper for resource mobilization for national elimination efforts
- Sources
 - Government
 - Donors
 - Partners

6. Implementation of Malaria Elimination (re-orientation)

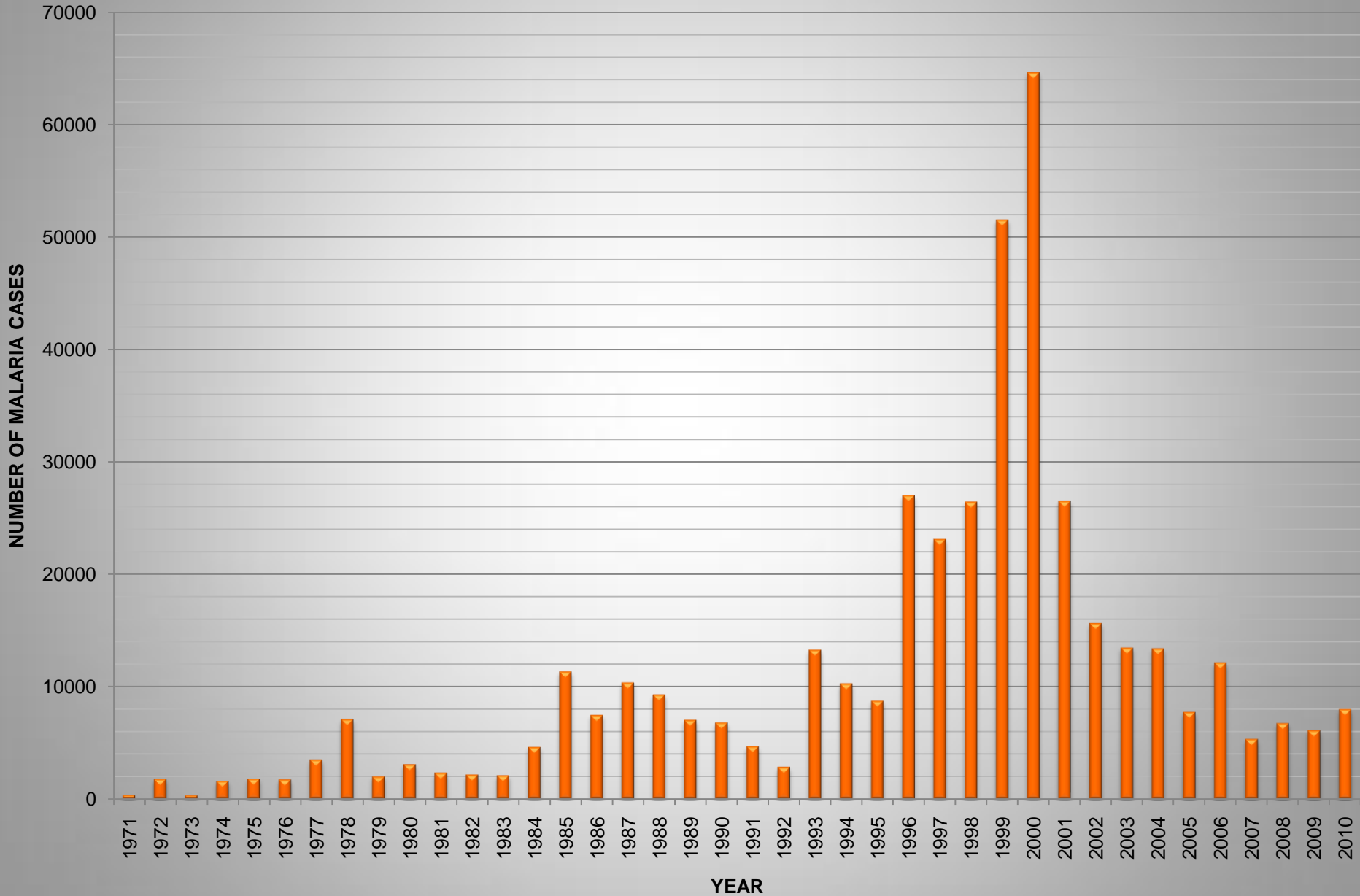
- Implement with partners
- Monitor and evaluate
- Report- government and scientific community

Malaria Situation in South Africa

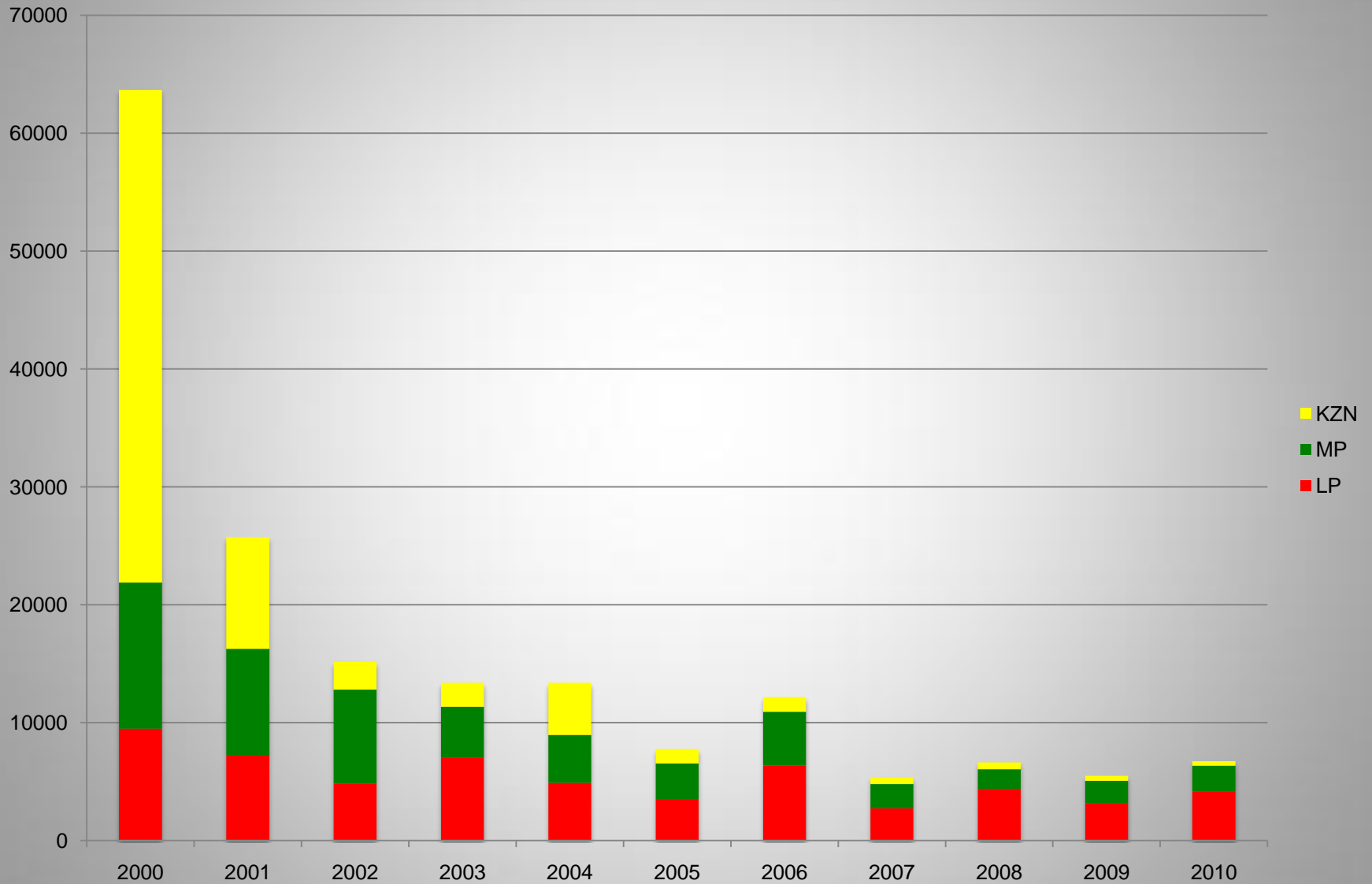




REPUBLIC OF SOUTH AFRICA | MALARIA CASES 1971 – 2010

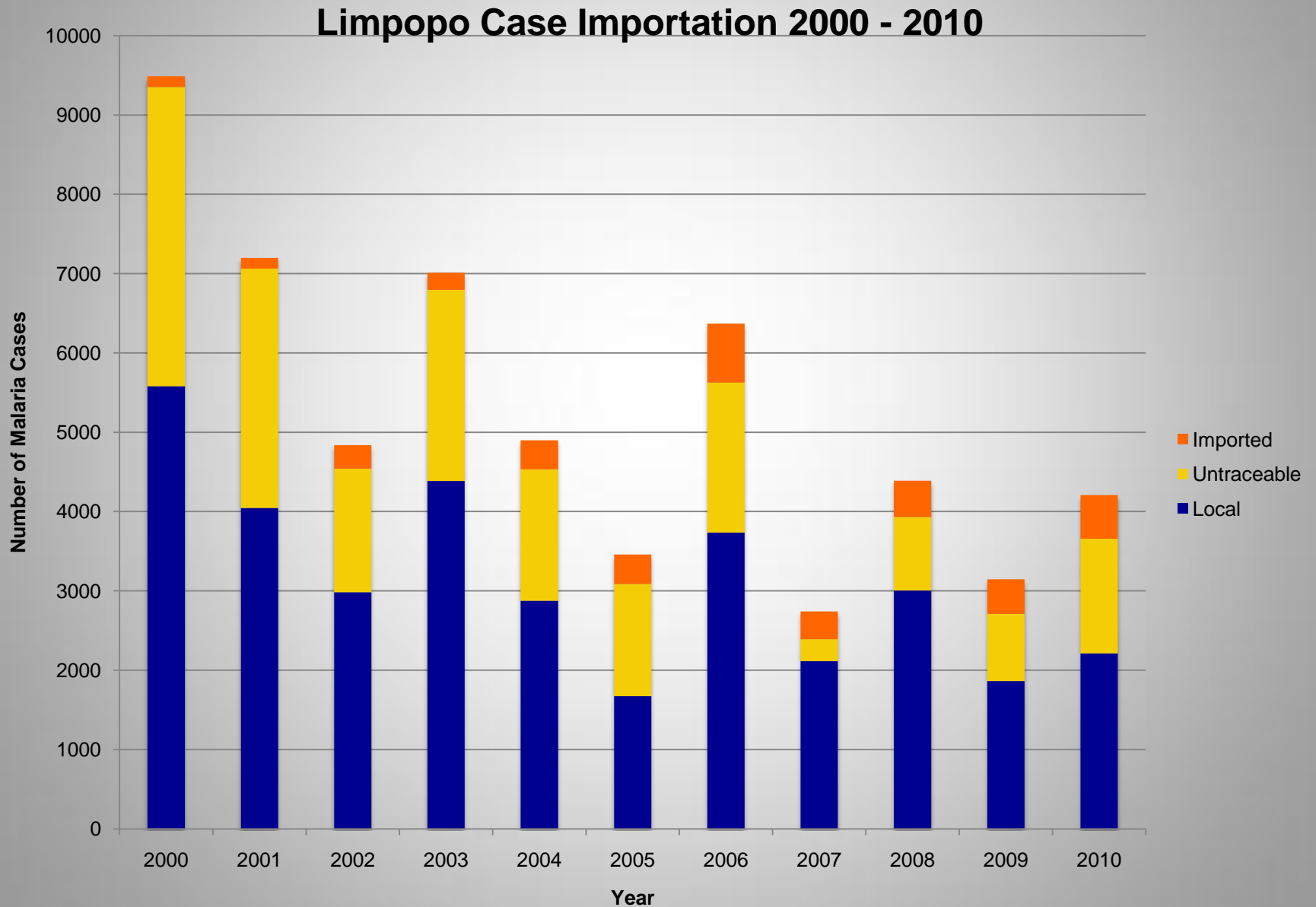


Malaria Cases in South Africa 2000 – 2010

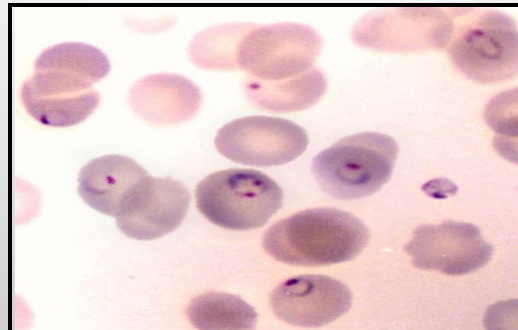


Between 2000 & 2010, mortality reduced by 96%; morbidity by 89%

Case Importation



Interventions for Malaria Elimination



Interventions: Surveillance

Interventions	Control programme	Pre-elimination programme	Elimination programme
Surveillance	<ul style="list-style-type: none"> • Improve surveillance, national and provincial coverage • Country and provincial profiles • Malaria surveys • Commodity tracking (drugs, insecticides, RDTs, etc) • Monitoring of expenditure 	<ul style="list-style-type: none"> • Elimination database • GIS-based database on cases, interventions and vectors • Active case detection • Classification of malaria cases • Central records bank • Genotyping, isolate bank • Malaria information surveys and other evidence generating activities/research • Immediate notification of cases 	<ul style="list-style-type: none"> • Case investigation and classification • Foci investigation and classification • Routine genotyping • Malaria surveys • Immediate notification of cases • Meteorological monitoring

Interventions: Epidemic Preparedness and Response

Interventions	Control programme	Pre-elimination programme	Elimination programme
EPR	<ul style="list-style-type: none"> • Meteorological monitoring • Early warning and detection systems • Seasonal planning • Epidemic preparedness and response within 2 weeks of detection (strengthen) 	<ul style="list-style-type: none"> • Malaria early warning systems (MEWS), Meteorological monitoring • Early warning and detection systems • Seasonal planning • Epidemic response 	<ul style="list-style-type: none"> • Meteorological monitoring • Early warning and detection systems • Seasonal planning • Epidemic response

Interventions: Vector Control

Intervention	Control programme	Pre-elimination programme	Elimination programme
Vector Control	<ul style="list-style-type: none"> • Develop IVM guidelines • GIS mapping of localities • Transmission reduction through high (90%) population coverage of IRS • Entomological surveillance (prevalence, distribution and behaviour) • Insecticide resistance monitoring 	<ul style="list-style-type: none"> • GIS mapping of localities • Total (90%) coverage by IRS in targeted areas (foci) • Entomological surveillance • Insecticide resistance monitoring • Implement IVM guidelines in specific situations • Insecticide resistance management implementation 	<ul style="list-style-type: none"> • GIS mapping of localities • Total (100%) coverage by IRS in targeted areas (foci) • IVM as a complementary measure in specific situations • Entomological surveillance • Insecticide resistance monitoring

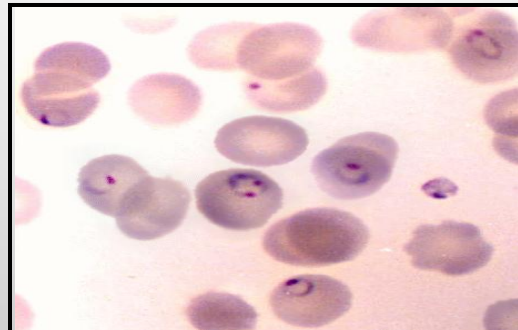
Interventions: Health Promotion

Intervention	Control programme	Pre-elimination programme	Elimination programme
Health Promotion	<ul style="list-style-type: none"> • Develop a communication strategy for malaria elimination • Advocacy for malaria elimination • Traditional healers including Health Promotion (HP) • Case Management • Personal protection • KAP surveys (xenophobia, taking of blood) • Coverage indicators • Ongoing KAP • Integrated vector management (IVM) in context of community participation 	<ul style="list-style-type: none"> • Advocacy for malaria elimination • Intensify HP • IVM in context of community participation • Community Integrated Management of Childhood Illnesses (IMCI) 	<ul style="list-style-type: none"> • Intensify HP • IVM in context of community participation • Prevention of malaria in travellers

Interventions: Programme Management

Intervention	Control programme	Pre-elimination programme	Elimination programme
Programme Management	<ul style="list-style-type: none"> • Partnerships strengthening procurement, supply management • Resource mobilisation (human resource, financial and commodity) • Regional initiative • Cross-border initiative • Integration with health programmes for delivery of interventions • Domestic/external funding 	<ul style="list-style-type: none"> • Develop costed implementation plans each province • Legislation (regulation) on malaria • Regional initiative – support control activities • Mobilisation of domestic funding • Establish Malaria Elimination Committee • Advocacy for malaria elimination 	<ul style="list-style-type: none"> • Functional Malaria Elimination Committee • Advocacy for malaria elimination

Plans for 2011



Action for 2011

- Develop a malaria elimination monitoring and evaluation plan
- Draft Malaria Active Case Detection Guidelines
- Conduct active case detection pilot
- Train Malaria Control staff on EPR
- Develop a GIS map for vector and parasites
- Strengthen the malaria information system



Challenges

Summary of challenges

- Shortage of skilled human resources
 - Entomological Capacity
 - Information officers
- Streamlining of malaria information systems
- Regular data analysis to inform provincial and district programmes
- Need for strong monitoring and evaluation tool

General Challenges

- Surveys to support DOH Policy
- Importation of malaria cases
- Migrant populations
- IEC (target messages)



Areas for research

- Risk factors for local malaria transmission
- Insecticide Resistance studies
- Drug Resistance studies
- Quality Assurance of RDTs and Microscopy
- Role of ITMs in elimination
- KAPs to determine community perceptions on malaria
- Feasibility of border screening for prevention of re-introduction
- Feasibility of ACD in low transmission settings



Questions / Discussion

“ Eliminating malaria needs change in mindset, change in game plan and renewed energy.

*There is no time better than **now** to rid South Africa of malaria...”*

